

L:\Users\p\Mathews\perryville\10.01\10.01.dwg 2/18/2010

THIS MAP HAS BEEN REDRAWN USING COMPUTER AIDED DRAFTING/DESIGN (CAD/D) BASED ON THE MAP PREPARED BY STUDDER AND McELDONNEY, P.A., DATED JUNE 2003.

THE AREAS, BOUNDARIES AND DIMENSIONS SHOWN ON THIS TAX MAP ARE DERIVED FROM GROUND SURVEYS, AERIAL SURVEYS AND RECORDED PLANS, MAPS, DEEDS AND WILLS AND ARE TO BE USED FOR ASSESSMENT PURPOSES ONLY.

I HEREBY CERTIFY THAT THIS MAP HAS BEEN REVISED UNDER MY IMMEDIATE SUPERVISION AND COMPLIES WITH THE LAWS OF THE STATE OF NEW JERSEY.
Pamela L. Mathews
 PAMELA L. MATHEWS
 PROFESSIONAL ENGINEER, LAND SURVEYOR
 NEW JERSEY LICENSE NO. 41181

TAX MAP
TOWNSHIP OF READINGTON
HUNTERDON COUNTY, NEW JERSEY
SCALE: 1"= 200 JANUARY 2010
PAMELA L. MATHEWS, P.E., L.S.
HATCH MOTT MACDONALD
PERRYVILLE III, 53 FRONTAGE ROAD, SUITE 170
HAMPTON, NEW JERSEY

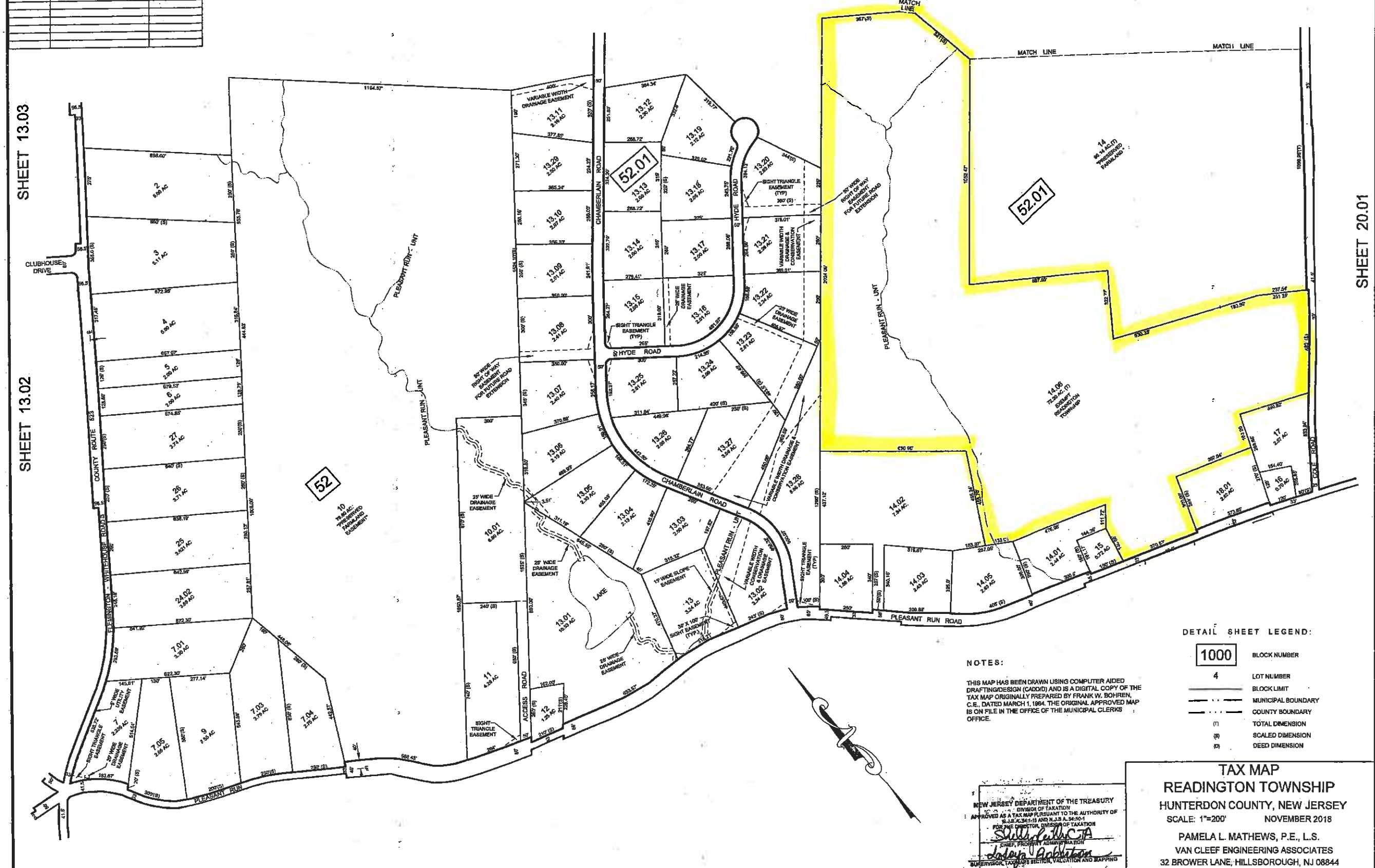
REVISIONS		
DATE	L.S. NAME	L.S. No.

SHEET 14

SHEET 14.02

SHEET 13.02
SHEET 13.03

SHEET 20.01



SHEET 19

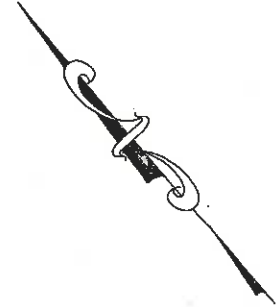
SHEET 19.04

DETAIL SHEET LEGEND:

- 1000 BLOCK NUMBER
- 4 LOT NUMBER
- BLOCK LIMIT
- - - MUNICIPAL BOUNDARY
- - - COUNTY BOUNDARY
- (1) TOTAL DIMENSION
- (2) SCALED DIMENSION
- (3) DEED DIMENSION

NOTES:

THIS MAP HAS BEEN DRAWN USING COMPUTER AIDED DRAFTING/DESIGN (CAD/D) AND IS A DIGITAL COPY OF THE TAX MAP ORIGINALLY PREPARED BY FRANK W. BOHREN, C.E., DATED MARCH 1, 1984. THE ORIGINAL APPROVED MAP IS ON FILE IN THE OFFICE OF THE MUNICIPAL CLERK'S OFFICE.



NEW JERSEY DEPARTMENT OF THE TREASURY
DIVISION OF TAXATION
APPROVED AS A TAX MAP PURSUANT TO THE AUTHORITY OF
S.A. 5:26-11 AND N.J.S.A. 54:10-1
FOR THE DIRECTOR, DIVISION OF TAXATION
Shelly A. ...
CHIEF, PROPERTY ADMINISTRATION
John ...
SUPERVISOR, TAX MAPS SECTION, VALUATION AND MAPPING
DATE: 11-17-2010 SERIAL NO.: 1102

TAX MAP
READINGTON TOWNSHIP
HUNTERDON COUNTY, NEW JERSEY
SCALE: 1"=200' NOVEMBER 2018
PAMELA L. MATHEWS, P.E., L.S.
VAN CLEEF ENGINEERING ASSOCIATES
32 BROWER LANE, HILLSBOROUGH, NJ 08844

SHEET 15.08

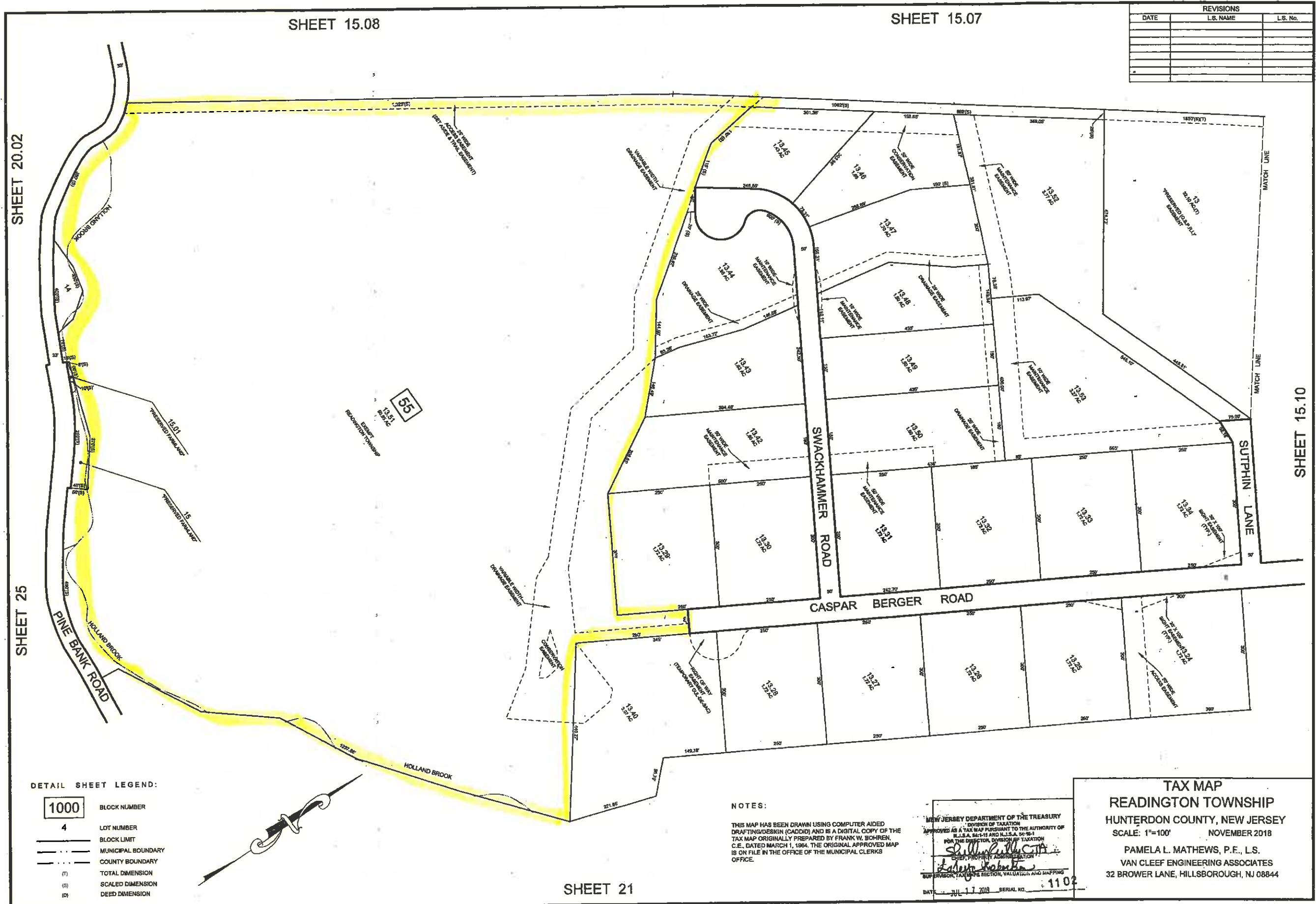
SHEET 15.07

REVISIONS		
DATE	L.S. NAME	L.S. No.

SHEET 20.02

SHEET 25

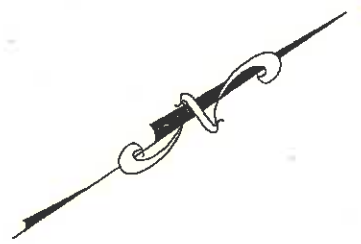
SHEET 15.10



55

DETAIL SHEET LEGEND:

- 1000 BLOCK NUMBER
- 4 LOT NUMBER
- BLOCK LIMIT
- MUNICIPAL BOUNDARY
- COUNTY BOUNDARY
- (T) TOTAL DIMENSION
- (S) SCALED DIMENSION
- (D) DEED DIMENSION



NOTES:
 THIS MAP HAS BEEN DRAWN USING COMPUTER AIDED DRAFTING/DESIGN (CADD) AND IS A DIGITAL COPY OF THE TAX MAP ORIGINALLY PREPARED BY FRANK W. SOHREN, C.E. DATED MARCH 1, 1964. THE ORIGINAL APPROVED MAP IS ON FILE IN THE OFFICE OF THE MUNICIPAL CLERK'S OFFICE.

NEW JERSEY DEPARTMENT OF THE TREASURY
 DIVISION OF TAXATION
 APPROVED AS A TAX MAP PURSUANT TO THE AUTHORITY OF N.J.S.A. 54:13 AND N.J.S.A. 54:26-1
 FOR THE DIRECTOR, DIVISION OF TAXATION
[Signature]
 CHIEF, PROPERTY ADMINISTRATION
 SUPERVISOR, TAXMAPS SECTION, VALUATION AND MAPPING
 DATE: JUL 17 2018 SERIAL NO. 1102

TAX MAP
 READINGTON TOWNSHIP
 HUNTERDON COUNTY, NEW JERSEY
 SCALE: 1"=100' NOVEMBER 2018
 PAMELA L. MATHEWS, P.E., L.S.
 VAN CLEEF ENGINEERING ASSOCIATES
 32 BROWER LANE, HILLSBOROUGH, NJ 08844

SHEET 21

REVISIONS		
DATE	L.S. NAME	L.S. No.

DETAIL SHEET LEGEND:

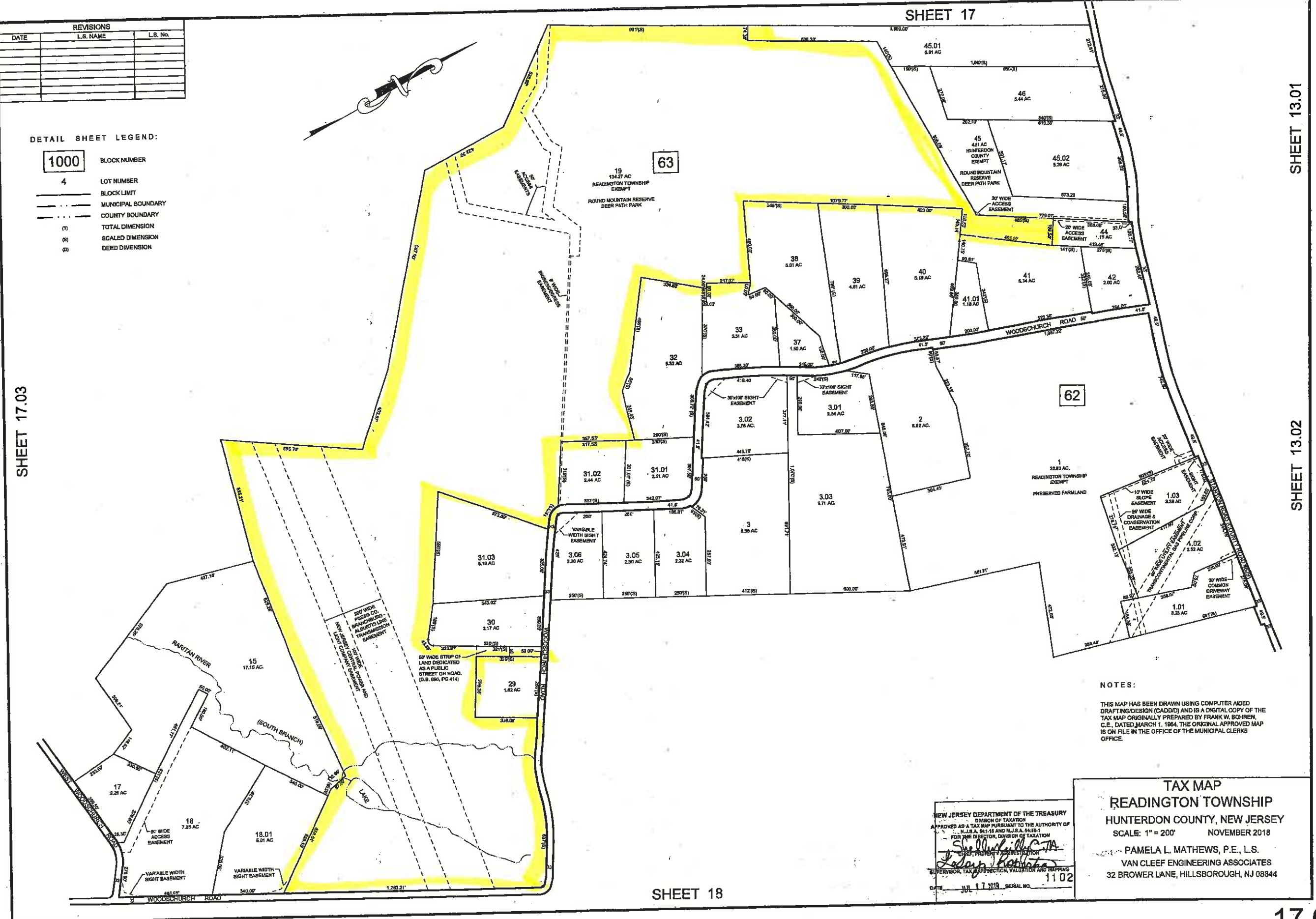
- 1000 BLOCK NUMBER
- 4 LOT NUMBER
- BLOCK LIMIT
- - - MUNICIPAL BOUNDARY
- - - COUNTY BOUNDARY
- (1) TOTAL DIMENSION
- (2) SCALED DIMENSION
- (3) DEED DIMENSION

SHEET 17.03

SHEET 17

SHEET 13.01

SHEET 13.02



NOTES:

THIS MAP HAS BEEN DRAWN USING COMPUTER AIDED DRAFTING/DESIGN (CADD) AND IS A DIGITAL COPY OF THE TAX MAP ORIGINALLY PREPARED BY FRANK W. BOHREN, C.E., DATED MARCH 1, 1994. THE ORIGINAL APPROVED MAP IS ON FILE IN THE OFFICE OF THE MUNICIPAL CLERK'S OFFICE.

NEW JERSEY DEPARTMENT OF THE TREASURY
 DIVISION OF TAXATION
 APPROVED AS A TAX MAP PURSUANT TO THE AUTHORITY OF
 N.J.S.A. 54:1-18 AND N.J.S.A. 54:1-19
 FOR THE DIRECTOR, DIVISION OF TAXATION
[Signature]
 SUPERVISOR, TAX MAP SECTION, VALUATION AND MAPPING
 DATE: JUL 17 2013 SERIAL NO. 1102

TAX MAP
 READINGTON TOWNSHIP
 HUNTERDON COUNTY, NEW JERSEY
 SCALE: 1" = 200' NOVEMBER 2018
 PAMELA L. MATHEWS, P.E., L.S.
 VAN CLEEF ENGINEERING ASSOCIATES
 32 BROWER LANE, HILLSBOROUGH, NJ 08844

SHEET 18

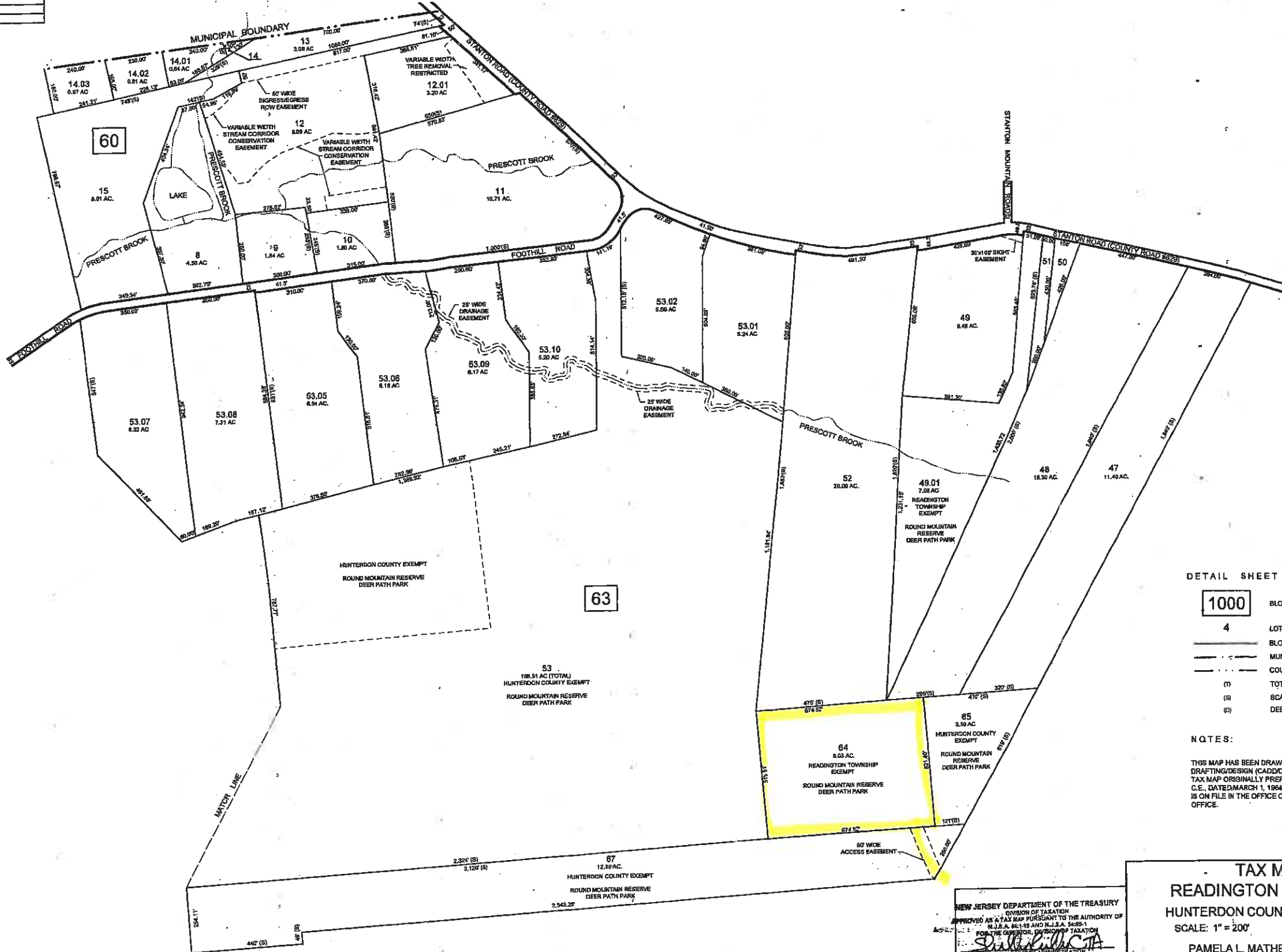
REVISIONS		
DATE	L.S. NAME	L.S. No.

SHEET 13.01

TOWNSHIP OF CLINTON
HUNTERDON COUNTY

SHEET 17.01

SHEET 17.04



DETAIL SHEET LEGEND:

- 1000 BLOCK NUMBER
- 4 LOT NUMBER
- BLOCK LIMIT
- - - MUNICIPAL BOUNDARY
- - - COUNTY BOUNDARY
- () TOTAL DIMENSION
- (S) SCALED DIMENSION
- (D) DEED DIMENSION

NOTES:

THIS MAP HAS BEEN DRAWN USING COMPUTER AIDED DRAFTING/DESIGN (CADD) AND IS A DIGITAL COPY OF THE TAX MAP ORIGINALLY PREPARED BY FRANK W. BOHREN, C.E., DATED MARCH 1, 1994. THE ORIGINAL APPROVED MAP IS ON FILE IN THE OFFICE OF THE MUNICIPAL CLERKS OFFICE.

TAX MAP
READINGTON TOWNSHIP
 HUNTERDON COUNTY, NEW JERSEY
 SCALE: 1" = 200' NOVEMBER 2018
 PAMELA L. MATHEWS, P.E., L.S.
 VAN CLEEF ENGINEERING ASSOCIATES
 32 BROWER LANE, HILLSBOROUGH, NJ 08844

NEW JERSEY DEPARTMENT OF THE TREASURY
 DIVISION OF TAXATION
 APPROVED AS A TAX MAP PURSUANT TO THE AUTHORITY OF
 N.J.S.A. 54:1-9 AND N.J.S.A. 54:9-1
 FOR THE SUPERVISOR, DIVISION OF TAXATION
[Signature]
 CHIEF, PROPERTY ADMINISTRATION
 SUPERVISOR, TAX MAPS SECTION, VALUATION AND MAPPING
 DATE: JUL 17 2018 SERIAL NO. 4102

SHEET 17.02

SHEET 17.03

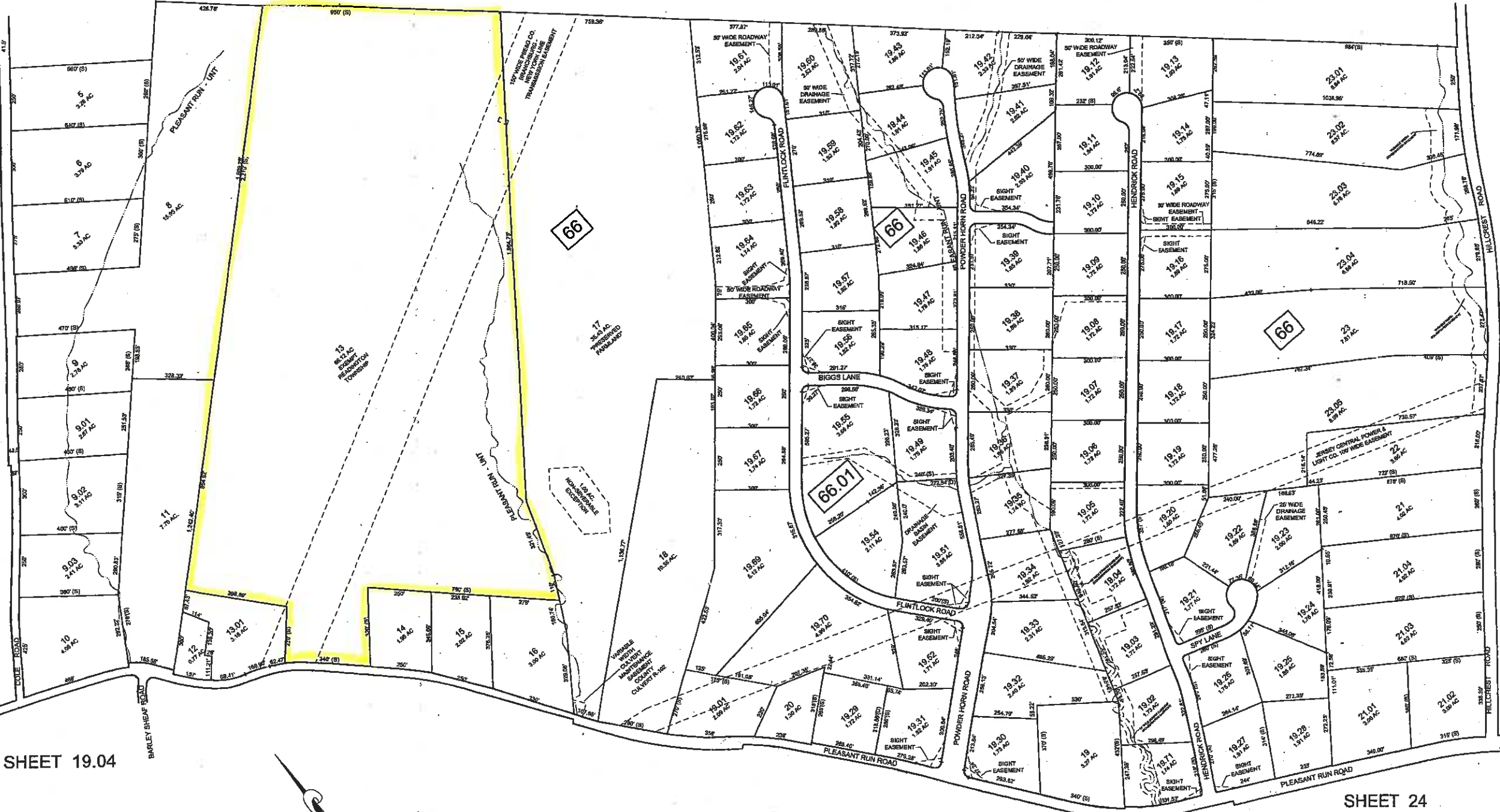
REVISIONS		
DATE	L.S. NAME	L.S. No.

SHEET 20

SHEET 20.02

SHEET 14.02

SHEET 14.01

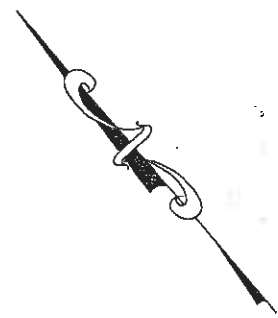


SHEET 25.01

SHEET 19.04

DETAIL SHEET LEGEND:

1000	BLOCK NUMBER
4	LOT NUMBER
—	BLOCK LIMIT
---	MUNICIPAL BOUNDARY
----	COUNTY BOUNDARY
(8)	TOTAL DIMENSION
(8')	SCALED DIMENSION
(8)	DEED DIMENSION



SHEET 19.05

SHEET 24

NOTES:

THIS MAP HAS BEEN DRAWN USING COMPUTER AIDED DRAFTING/DESIGN (CADD) AND IS A DIGITAL COPY OF THE TAX MAP ORIGINALLY PREPARED BY FRANK W. BOHREN, C.E., DATED MARCH 1, 1984. THE ORIGINAL APPROVED MAP IS ON FILE IN THE OFFICE OF THE MUNICIPAL CLERK'S OFFICE.

JUL 11 2018 11:02

TAX MAP
READINGTON TOWNSHIP
 HUNTERDON COUNTY, NEW JERSEY
 SCALE: 1"=200' NOVEMBER 2018
 PAMELA L. MATHEWS, P.E., L.S.
 VAN CLEEF ENGINEERING ASSOCIATES
 32 BROWER LANE, HILLSBOROUGH, NJ 08844