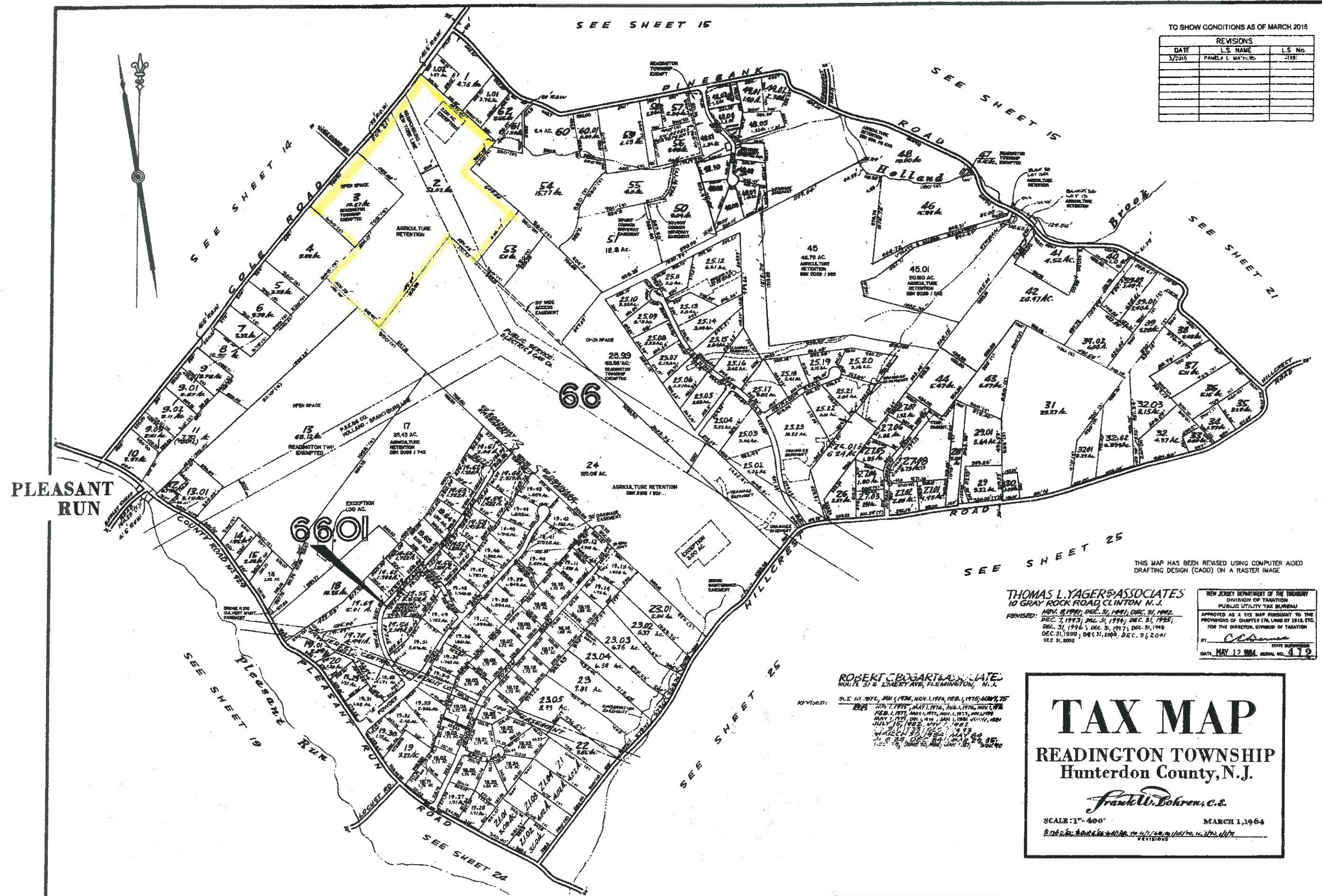


TO SHOW CONDITIONS AS OF MARCH 2015

REVISIONS		
DATE	L.S. NAME	L.S. No.
3/2015	PAMELA L. MATHEWS	-118-



THIS MAP HAS BEEN REVISED USING COMPUTER AIDED DRAFTING DESIGN (CADD) ON A RASTER IMAGE

THOMAS L. YAGER & ASSOCIATES
 10 GRAY ROCK ROAD CLINTON, N.J.
 REVISED: NOV. 8, 1990; DEC. 31, 1991; DEC. 31, 1992;
 DEC. 7, 1993; DEC. 31, 1994; DEC. 31, 1995;
 DEC. 31, 1996; DEC. 31, 1997; DEC. 31, 1998;
 DEC. 31, 1999; DEC. 31, 2000; DEC. 31, 2001;
 DEC. 31, 2002

NEW JERSEY DEPARTMENT OF THE TREASURY
 DIVISION OF TAXATION
 PUBLIC UTILITY TAX BUREAU
 APPROVED AS A TAX MAP PURSUANT TO THE
 PROVISIONS OF CHAPTER 176, LAWS OF 1915, ETC.
 FOR THE DIRECTOR, DIVISION OF TAXATION
 BY: *C. Deane*
 DATE: MAY 12 1994, SERIAL NO. 419

ROBERT C. BOGART & ASSOCIATES
 ROUTE 31 & EMERY AVE, FLEMINGTON, N.J.
 REVISED: JUL 10, 1974, AUG 1, 1974, NOV 1, 1974, FEB 1, 1975, MAY 1, 75
 FEB 1, 1976, MAY 1, 1976, AUG 1, 1976, NOV 1, 1976
 FEB 1, 1977, MAY 1, 1977, NOV 1, 1977, DEC 1, 1978
 MAY 1, 1979, DEC 1, 1979, JAN 1, 1980, JULY 1, 1980
 JULY 1, 1982, NOV 1, 1982
 JAN 1, 1983; DEC 31, 1983
 MARCH 25, 1984; MAY 24, 85;
 J. S. S. JUNE 25, 1985; JAN 1, 85;
 JUNE 25, 1985; JAN 1, 85;

TAX MAP
READINGTON TOWNSHIP
Hunterdon County, N.J.
Frank W. Bohren, c.s.
 SCALE: 1" = 400' MARCH 1, 1964
 REVISIONS