



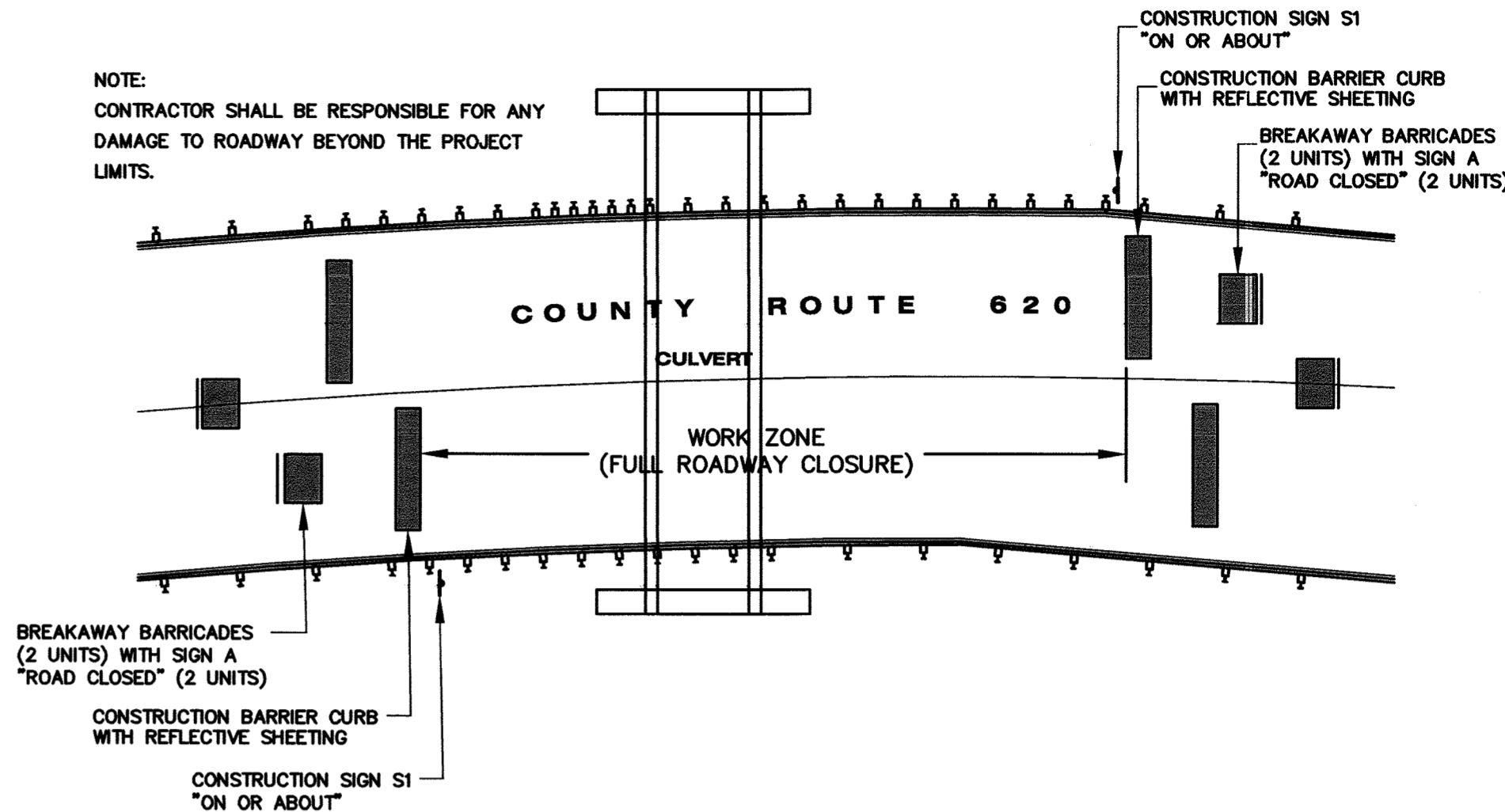
GENERAL NOTE:

1. THE "ON OR ABOUT" SPECIAL SIGNS SHALL BE POSTED A MINIMUM OF TWO (2) WEEKS PRIOR TO ROAD CLOSURE.
2. DIMENSIONS, COLORS AND DETAILS OF VARIOUS SIZE SHIELDS AND ACCESSORY PANELS TO FOLLOW STANDARDS IN THE CURRENT STANDARD HIGHWAY SIGNS PUBLICATION AND THE CURRENT MANUAL ON UNIFORM TRAFFIC CONTROL DEVICES FOR STREETS AND HIGHWAYS.
3. ALL SIGNS SHALL BE ASTM D 4956 TYPE III SHEETING. WOOD SIGNS ARE NOT PERMITTED.
4. ALL SIGNS SHALL BE DESIGNED TO MAINTAIN SIGN RETROREFLECTIVITY AT OR ABOVE MINIMUM LEVELS IN ACCORDANCE WITH MUTCD TABLE 2A-3.
5. THE CONTRACTOR SHALL MAINTAIN ACCESS TO ALL DRIVEWAYS AT ALL TIMES DURING CONSTRUCTION. THIS MAY REQUIRE DAILY RELOCATION OF BREAKAWAY BARRICADES, OR CONTRACTOR CAN PROVIDE PROVISION FOR TEMPORARY DRIVEWAY ACCESS.
6. NO SEPARATE PAYMENT WILL BE MADE FOR RELOCATION OF BREAKAWAY BARRICADES OR TEMPORARY DRIVEWAY ACCESS. COSTS THEREOF ARE TO BE INCLUDED IN THE VARIOUS PAY ITEMS IN THE PROPOSAL.
7. NO SEPARATE PAYMENT WILL BE MADE FOR RELOCATING TRAFFIC CONTROL DEVICES AND CONSTRUCTION BARRIER CURB AS REQUIRED FOR FULL OR PARTIAL ROADWAY CLOSURE. ALL COSTS SHALL BE INCLUDED IN THE VARIOUS PAY ITEMS IN THE PROPOSAL.
8. A TYPE III BREAKAWAY BARRICADE SHALL BE PLACED ON THE PAVEMENT SHOULDER ALONG SIDE STANDARD SIGN TYPE "B".
9. ALL SIGN LOCATIONS SHOWN ARE APPROXIMATE SUBJECT TO FIELD CONDITIONS AND AS DIRECTED BY THE ENGINEER.
10. THE DETOUR ARROW SIGN AT THE INTERSECTION OF THOR SOLBERG ROAD AND READINGTON ROAD SHALL ALTERNATE BETWEEN TYPE "E" AND TYPE "F", DEPENDING ON WHICH CULVERT IS UNDER CONSTRUCTION.
11. SIGNS "B" WILL NEED TO BE RELOCATED DEPENDING ON WHICH CULVERT IS UNDER CONSTRUCTION.
12. FULL ROADWAY CLOSURE SHALL BE RESTRICTED TO ONE WORK ZONE. AT NO TIME SHALL BOTH WORK ZONES BE CLOSED TO THRU TRAFFIC.

DETOUR PLAN
NOT TO SCALE

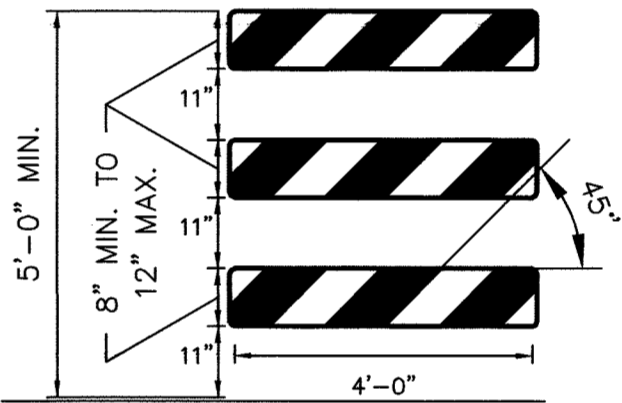
SPECIAL SIGNS (ALL BLACK ON ORANGE)				
SIGN	LEGEND	SIZE	MOUNT	NO. REQ.
S1	ON OR ABOUT THIS BRIDGE TO BE CLOSED PLAN AN ALTERNATE ROUTE	60" X 40"	2 POSTS	4
S2	READINGTON ROAD CLOSED TO THRU TRAFFIC BRIDGE CONSTRUCTION FOLLOW DETOUR	60" X 40"	2 POSTS	13
S3	READINGTON ROAD	30" X 10"	0	37

STANDARD SIGNS					
SIGN	LEGEND	TYPE	SIZE	MOUNT	NO. REQ.
A	ROAD CLOSED	R11-2	48" x 30"	BARRICADE	4
B	BRIDGE OUT MILES AHEAD LOCAL TRAFFIC ONLY	R11-3B	60" x 30"	2 POSTS	2
C	DETOUR 1500 FT	W20-2	48" x 48"	2 POSTS	5
D	DETOUR 500 FT	W20-2	48" x 48"	2 POSTS	11
E	DETOUR →	M4-9R	30" x 24"	1 POSTS	10
F	DETOUR ←	M4-9L	30" x 24"	1 POSTS	8
G	DETOUR ↑	M4-9X	30" x 24"	1 POSTS	4
H	END DETOUR	M4-8A	24" x 18"	1 POSTS	2



FULL ROADWAY CLOSURE DETAIL
NOT TO SCALE

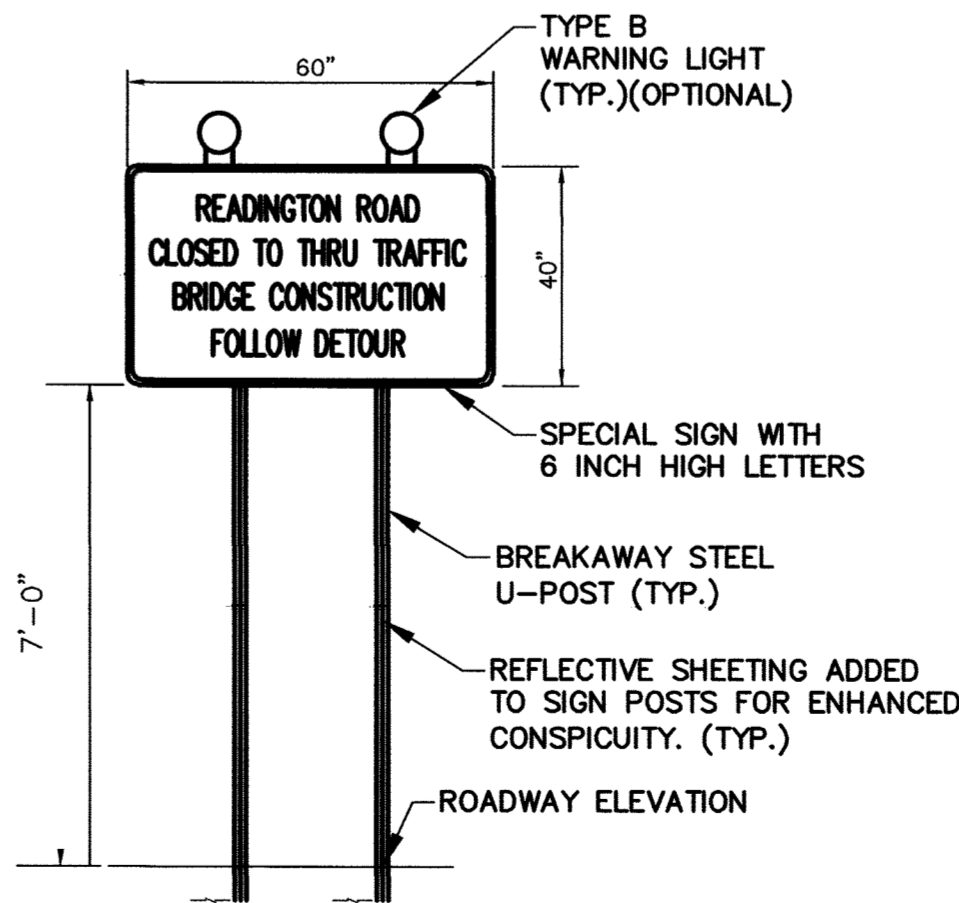
- NOTES:
- 1) ROADWAY CLOSURE DETAIL IS TYPICAL FOR BOTH R-48 & R-49.
 - 2) CONSTRUCTION SIGN TYPE "S1" SHALL BE INSTALLED AT BOTH R-48 & R-49 FOR THE ENTIRETY OF THE PROJECT. THE BREAKAWAY BARRICADES AND CONSTRUCTION BARRIER CURB SHALL BE MOVED AS THE CONSTRUCTION SITE MOVES FROM ONE CULVERT TO THE NEXT.



TYPE III BARRICADE - FRONT VIEW

- NOTES:
- 1) THE 8" MIN. x 48", OR 12" MAX. x 48" BARRICADE RAILS TO BE ATTACHED ARE ACCORDING TO THE MANUFACTURER'S RECOMMENDATION.
 - 2) ORANGE AND SILVER (WHITE) STRIPES SHALL BE RETROREFLECTIVE SHEETING, ASTM D 4956 TYPE III. ALTERNATE ORANGE AND SILVER (WHITE) STRIPES 6" WIDE SLOPING DOWNWARD AT AN ANGLE OF 45 DEGREES IN THE DIRECTION TRAFFIC IS TO PASS.
 - 3) THE FRAMING RAILS AND BALLAST FOR BREAKAWAY BARRICADE SHALL BE NCHRP-350 CRASHED TESTED AND FHWA APPROVED.
 - 4) IF NECESSARY, FABRICATE THE BALLAST AND PLACE ACCORDING TO THE MANUFACTURE'S RECOMMENDATION.

BREAKAWAY BARRICADE DETAIL
NOT TO SCALE



- NOTE:
- SPECIAL SIGN S1 AND S2 SHALL INCLUDE THE REFLECTIVE SHEETING ON THE SIGN POSTS.

SPECIAL SIGN INSTALLATION DETAIL
NOT TO SCALE

BY		REVISION	
DATE		DATE	
NO.		DATE	
COUNTY OF HUNTERDON OFFICE OF THE COUNTY ENGINEER PO BOX 2900 FLEMINGTON, NJ 08822-2900			
DETOUR PLAN			
REPLACEMENT OF CULVERTS R-48 & R-49			
READINGTON ROAD COUNTY ROUTE 620 TOWNSHIP OF READINGTON COUNTY OF HUNTERDON NEW JERSEY			
SCALE: AS SHOWN	DATE: JUNE 2022	DRAWN BY: JGG	ACAD FILE No: 004-R-48_R-49-DETOUR_PLAN
COUNTY ENGINEER: THOMAS B. MATHEWS, N.J.P.E. No. 41676			3 10