

REVISIONS		
DATE	L.S. NAME	L.S. No.

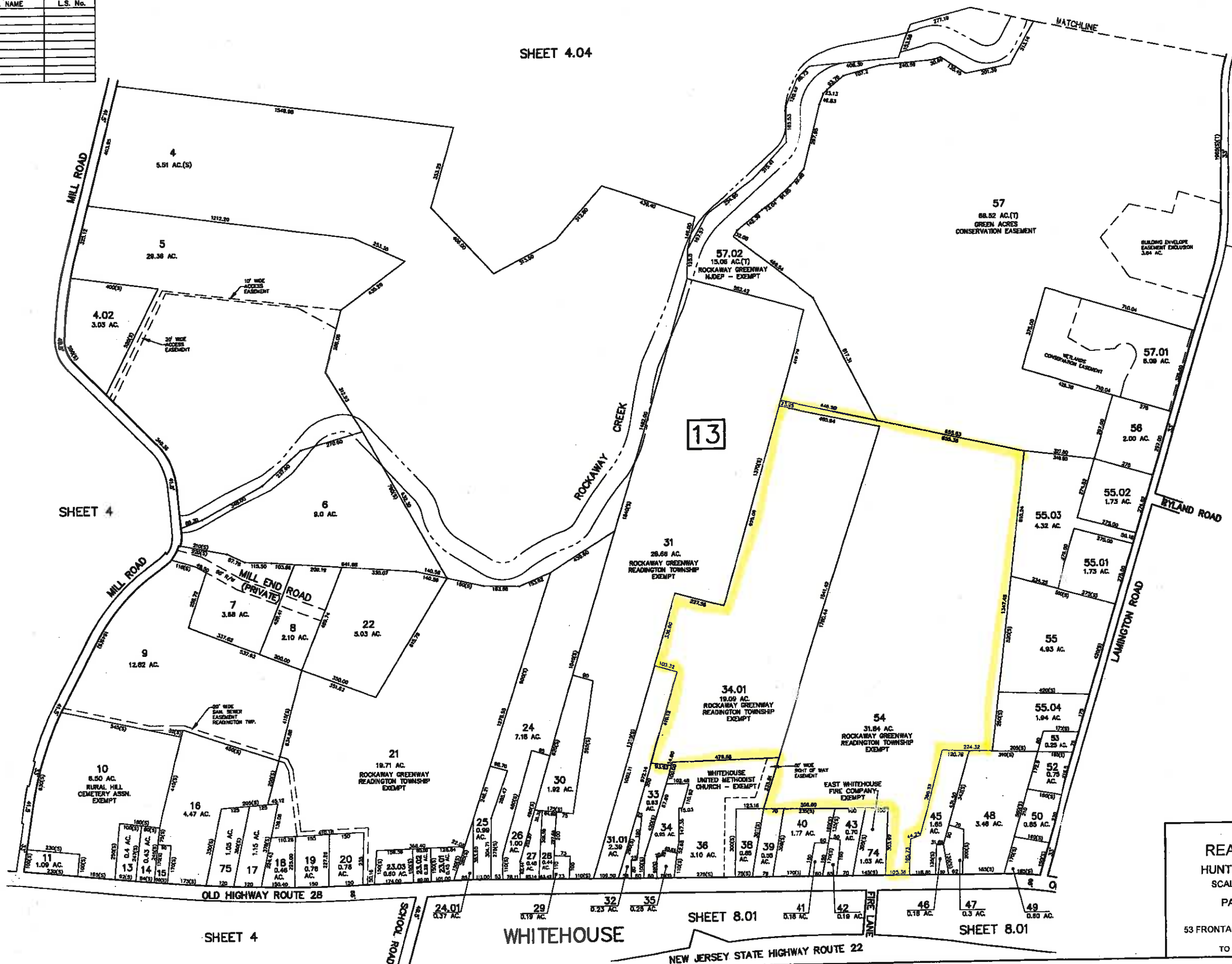
SHEET 4.04

SHEET 4.03

SHEET 4.02

SHEET 4

13



THIS MAP HAS BEEN REDRAWN USING COMPUTER AIDED DRAFTING/DESIGN (CAD/D) BASED ON THE MAP PREPARED BY FRANK R. BOHREN, C.E. DATED MARCH 1, 1984.

THE AREA BOUNDARIES AND DIMENSIONS SHOWN ON THIS TAX MAP ARE DERIVED FROM GROUND SURVEYS, AERIAL SURVEYS AND RECORDED PLANS, MAPS, DEEDS AND WILLS AND ARE TO BE USED FOR ASSESSMENT PURPOSES ONLY.

TAX MAP
READINGTON TOWNSHIP
 HUNTERDON COUNTY, NEW JERSEY
 SCALE: 1" = 200' MARCH 2014
 PAMELA L. MATHEWS, P.E., L.S.
 HATCH MOTT MACDONALD
 53 FRONTAGE ROAD, SUITE 170, HAMPTON, NJ 08827
 TO SHOW CONDITIONS AS OF MARCH 2014

L:\municipal\readington\map\2333358\13\Tax Map\Map\Map.mxd ACSD 2013\TAX MAP SHEET 04-04_03.dwg 9/1/2013

POTTERSTOWN

THOMAS L. YAGER & ASSOCIATES
 10 GRAY ROCK ROAD, CLINTON, N.J.
 REVISED: NOV. 8, 1991; DEC. 31, 1991; DEC. 31, 1992
 DEC. 31, 1993; DEC. 31, 1994; DEC. 31, 1995; DEC. 31, 1996
 DEC. 31, 1997; DEC. 31, 1998; DEC. 31, 1999; DEC. 31, 2000
 DEC. 31, 2001; DE C 3, 2002

ROBERT C. BOGARTE ASSOCIATES
 ROUTE 51 & EMERY AVE., FLEMINGTON, N.J.
 REVISED: OCT. 10, 1972; JAN. 1, 1976; NOV. 1976; FEB. 1, 1978; MAY, 78
 NOV. 1, 1978; MAY 1, 1979; AUG. 1, 1979; NOV. 1, 1979
 FEB. 1, 1979; MAY 1, 1979; NOV. 1, 1979; NOV. 1, 1979
 MAY 1, 1979; DEC. 1, 1979; JAN. 1, 1980; JUNE 1, 1980
 JULY 1, 1982; NOV. 1, 1982
 FEB. 1, 1983; DEC. 1, 1983
 MARCH 30, 1988; MAY 1, 1988
 AUG. 30, 1988; DEC. 30, 1988; MAR. 29, 1989
 OCT. 15, 1989; JULY 1, 1990; OCT. 1, 1991; JAN. 1, 1992

TAX MAP

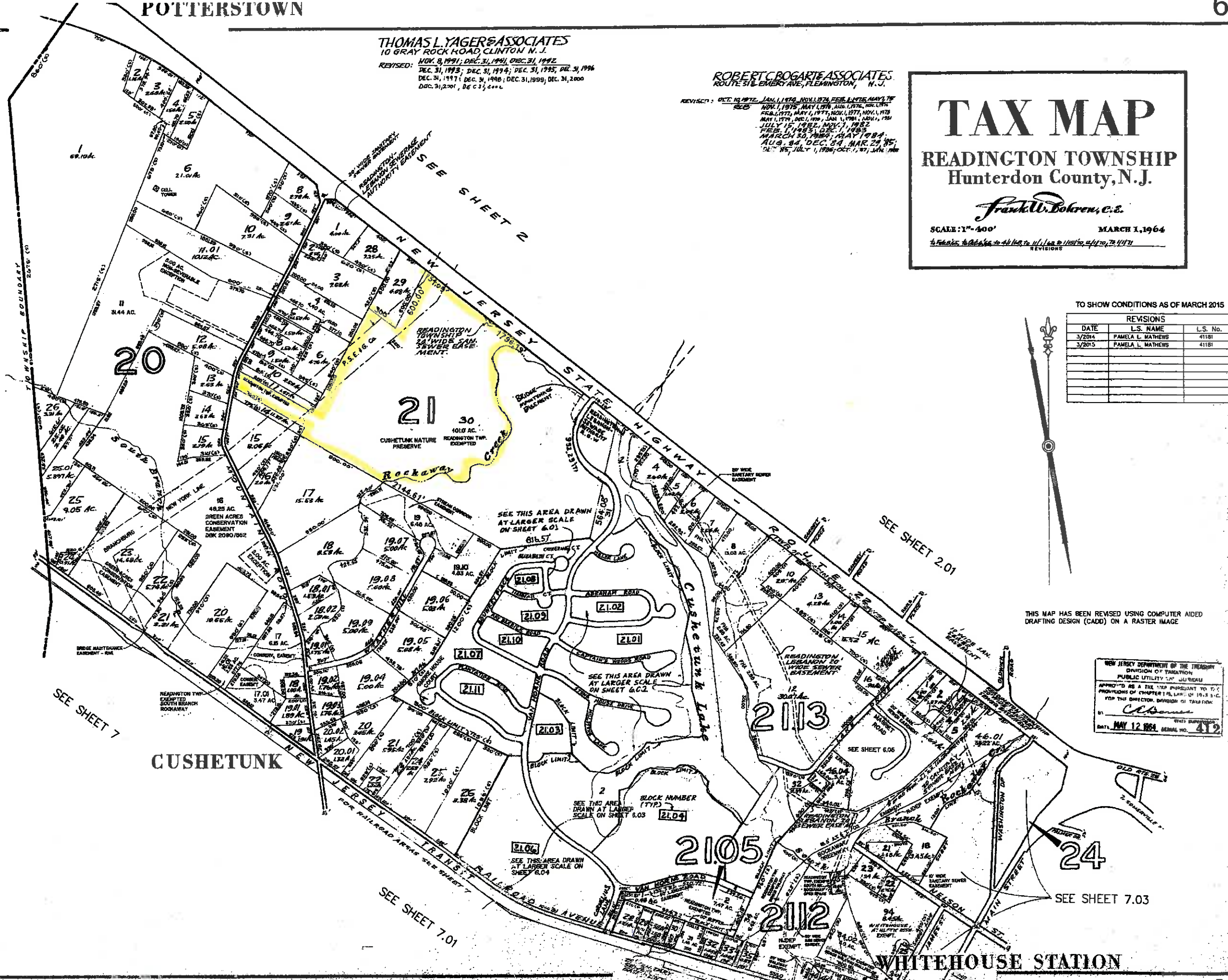
READINGTON TOWNSHIP Hunterdon County, N.J.

Frank W. Bokren, C.E.

SCALE: 1" = 400' MARCH 1, 1964

to be used in accordance with the provisions of the Act of March 1, 1964, P.L. 1964-17, N.J.S. 17:27

CLINTON COUNTY



TO SHOW CONDITIONS AS OF MARCH 2015

REVISIONS		
DATE	L.S. NAME	L.S. No.
3/2014	PAMELA L. MATHEWS	41181
3/2015	PAMELA L. MATHEWS	41181



THIS MAP HAS BEEN REVISED USING COMPUTER AIDED DRAFTING DESIGN (CADD) ON A RASTER IMAGE

NEW JERSEY DEPARTMENT OF THE TREASURY
 DIVISION OF TAXATION
 PUBLIC UTILITY TAX BUREAU
 APPROVED AS A TAX MAP PURSUANT TO THE PROVISIONS OF CHAPTER 178, LAWS OF 1975, P.L. 1975-107 FOR THE DIRECTOR, DIVISION OF TAXATION
 BY: *[Signature]*
 DATE: MAY 12, 1994, SERIAL NO. 412

L:\munic\pvt\Readington_Twp\0333356 RT Tax Map\img\jstar_jew\TAX MAP-SHEET 06 R.dwg 4/30/2014

THOMAS L. YAGER & ASSOCIATES
 10 GRAY ROCK ROAD CLINTON N.J.
 PREPARED: NOV. 8, 1991; DEC. 31, 1991; DEC. 31, 1992;
 DEC. 31, 1994; DEC. 31, 1995; DEC. 31, 1996;
 DEC. 31, 1997; DEC. 31, 1998; DEC. 31, 1999;
 DEC. 31, 2000; DEC. 31, 2001; DEC. 31, 2002.

REVISIONS		
DATE	L.S. NAME	L.S. No.
3/2014	PAMELA L. MATHEWS	41181

ROBERT C. BOGART & ASSOCIATES
 ROUTE 28 - 1/2 MILE W. OF PLUMINGTON, N.J.
 OCT. 1, 1972; JAN. 1, 1974; NOV. 1, 1974; FEB. 1, 1975; MAY 1, 1975;
 MAY 1, 1976; MAY 1, 1976; AUG. 1, 1976; OCT. 1, 1976;
 MAY 1, 1978; DEC. 1, 1978; JAN. 1, 1979; JULY 15, 1982;
 NOV. 1, 1982; FEB. 1, 1983; DEC. 1, 1983;
 MARCH 1, 1987; MAY 1, 1987;
 AUG. 24, 1987; DEC. 31, 1987; DEC. 24, 1988; DEC. 25, 1988;
 JUNE 24, 1989; APRIL 1, 1990.

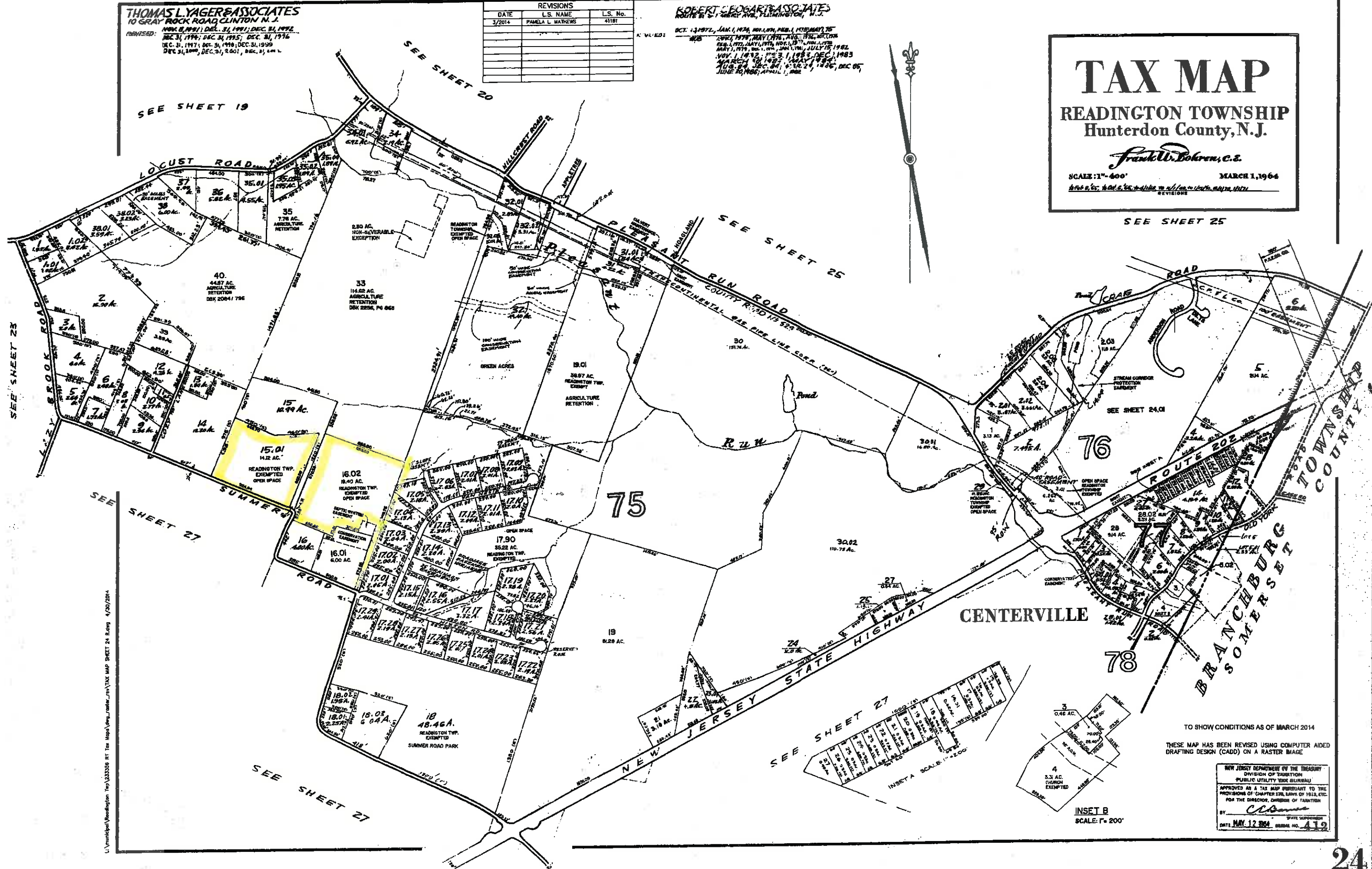
TAX MAP

READINGTON TOWNSHIP Hunterdon County, N.J.

Frank W. Bohren, c.e.

SCALE: 1" = 400' MARCH 1, 1964

REVISED



L:\municipal\Readington_Twp\233556_R1_Tax_Map\view_raster\TAX_MAP_SHEET_24.dwg 4/20/2014

TO SHOW CONDITIONS AS OF MARCH 2014
 THESE MAP HAS BEEN REVISED USING COMPUTER AIDED
 DRAFTING DESIGN (CADD) ON A RASTER IMAGE

NEW JERSEY DEPARTMENT OF THE TREASURY
 DIVISION OF TAXATION
 PUBLIC UTILITY TAX BUREAU
 APPROVED AS A TAX MAP PURSUANT TO THE
 PROVISIONS OF CHAPTER 176, LAWS OF 1913, ETC.
 FOR THE DIRECTOR, DIVISION OF TAXATION
 BY: *CCB*
 DATE: MAY 12, 2014 SERIAL NO. 419

